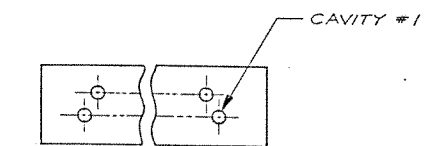
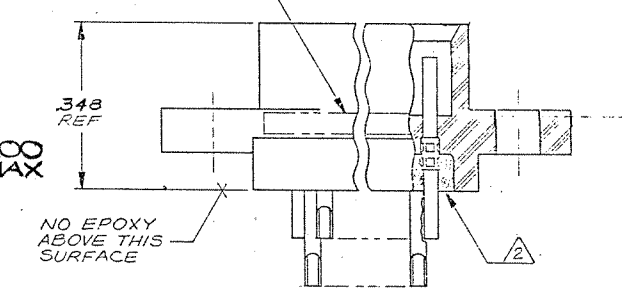
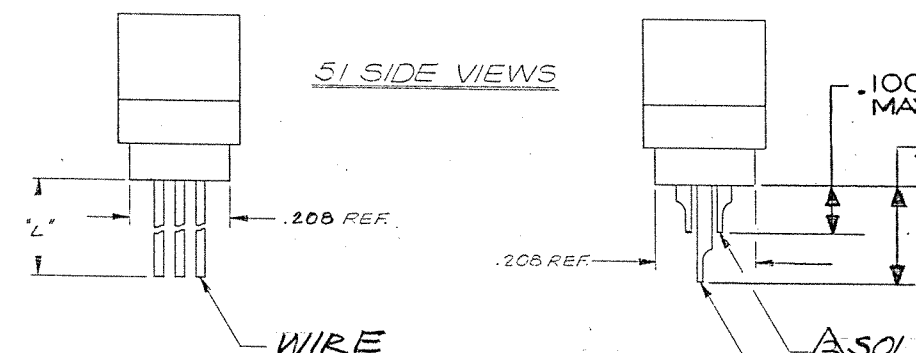
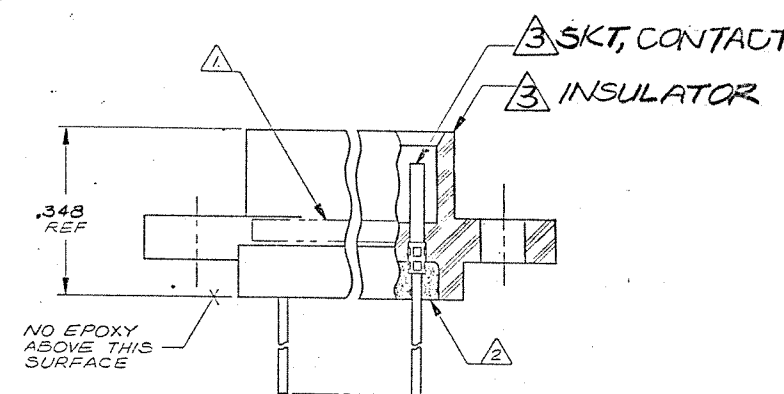
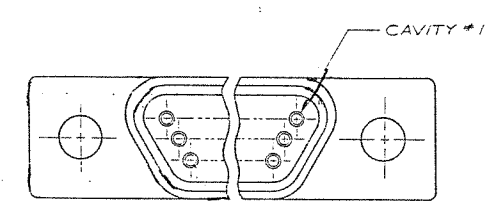
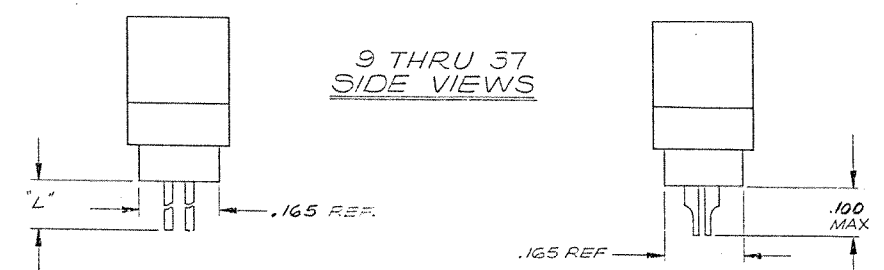
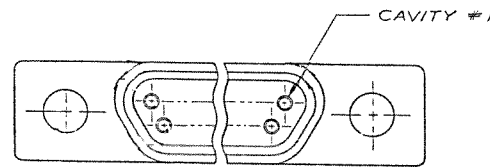


8 7 6 5 4 3 2 1

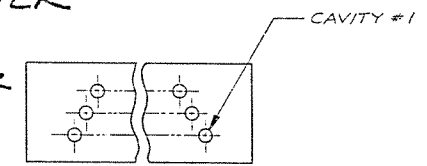
REVISIONS					
ZONE	LTR	ECN	DESCRIPTION	DATE	APPROVED
B		27054	NEW RELEASE	1/15/93	[Signature]

C Combine M & CD Dwg



9 THRU 37 CONFIGURATION

3 SOLDER POT-ADAPTER (SHORT)  
3 USED ON 51 ONLY SOLDER POT-ADAPTER (LONG)



51 CONFIGURATION

(SHOW WITH SOLDER POT TERMINATIONS FOR REFERENCE ONLY. WIRE TERMINATIONS ARE THE SAME CONFIGURATION)

NOTES: UNLESS OTHERWISE SPECIFIED

- 1 MARK "MALCO" OR MALCO LOGO, MILITARY PART NO. (e.g. M53513/07-\*) CODE IDENT. NO. & DATE CODE WITH .041 MIN HIGH CHARACTERS IN APPROXIMATE LOCATION SHOWN.
- 2 EPOXY USING HYSOL # 4215 & 3561.

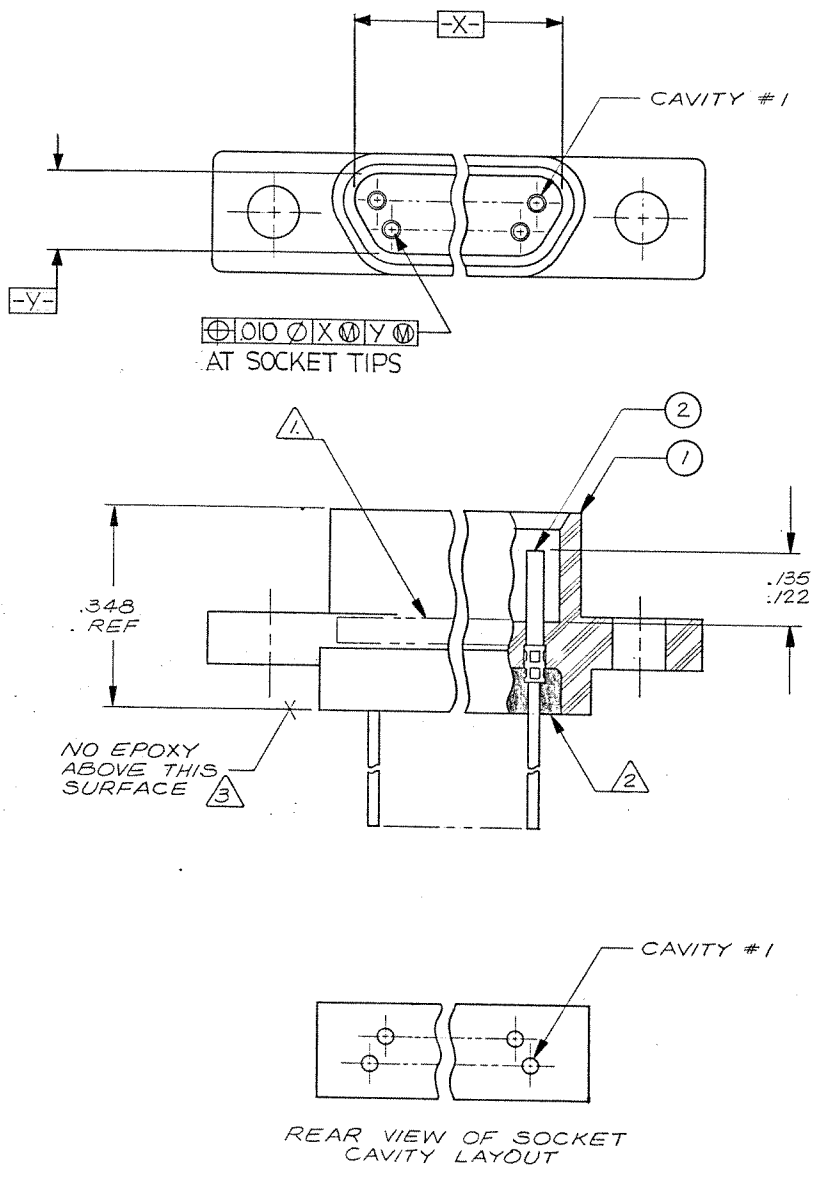
3 SOLDER POT: MATL: BRASS PER QQ-B-626, COMP 360, 1/2 HARD  
FINISH: COPPER ALLOY/GOLD PLATED  
SKT. CONTACT: MATL: COPPER ALLOY/GOLD PLATED  
HOUSING: MATL: (R3) POLYPHENYLENE SULFIDE RYTON RA-04  
(BR-68) PER MIL-M-24519, COLOR BROWN.

Tyco Customer Drawing 1-1532149-5

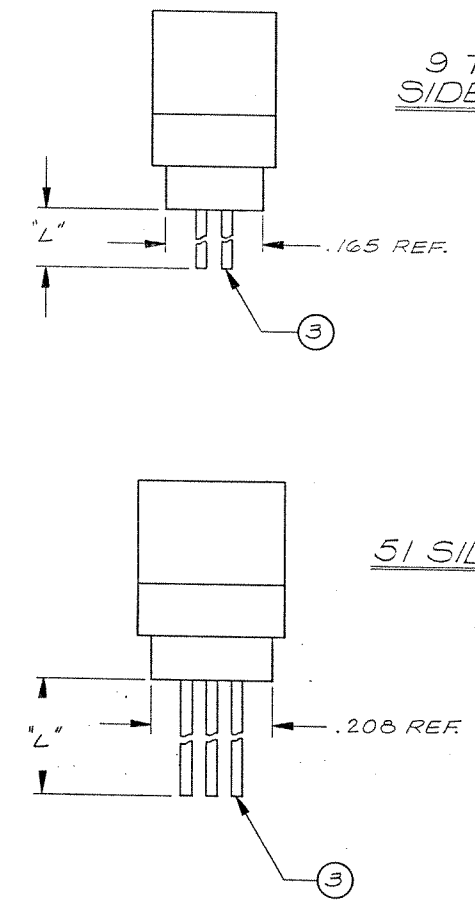
QTY REQD	CODE IDENT	PART OR IDENTIFYING NO.	NOMENCLATURE OR DESCRIPTION				
PARTS LIST							
UNLESS OTHERWISE SPECIFIED DIMENSIONS ARE IN INCHES TOLERANCES ARE: FRACTIONS DECIMALS ANGLES ± .XX ± ± ± .XXX ± ±		CONTRACT NO.	MALCO A MICRODOT COMPANY, INC. 306 PASADENA AVE., SO. PASADENA, CALIF. 91030				
MATERIAL		APPROVALS	DATE				
FINISH		CHECKED	1/15/93				
NEXT ASSY USED ON APPLICATION		PR. ENG.	7-5-92				
DO NOT SCALE DRAWING		APP'D.					
		These drawings and specifications are the property of Microdot Inc. and shall remain the property of Microdot Inc. and shall not be reprinted, reproduced or used in any way for the manufacture or sale of any article without written permission of Microdot Inc.					
		<table border="1"> <tr> <td>PROD CODE</td> <td>824</td> </tr> <tr> <td>CODE</td> <td>CD</td> </tr> </table>		PROD CODE	824	CODE	CD
PROD CODE	824						
CODE	CD						
		SIZE	D 98278				
		CODE IDENT NO.	095-0000-0446				
		DRAWING NO.					
		SCALE	NONE				
		SHEET / OF /					

8 7 6 5 4 3 2 1

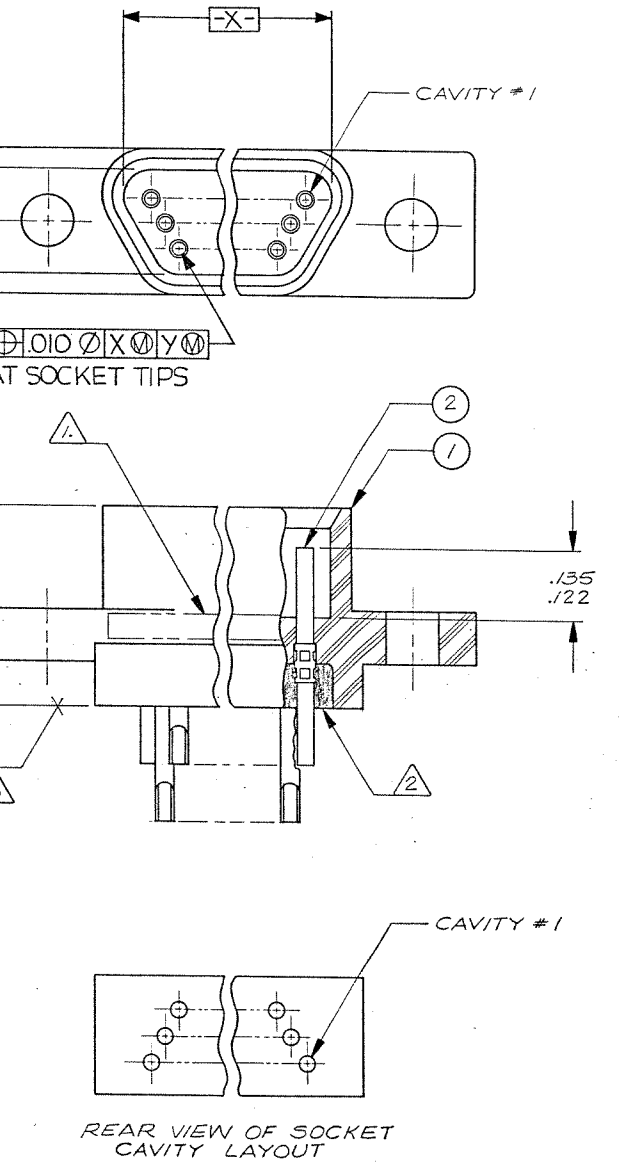
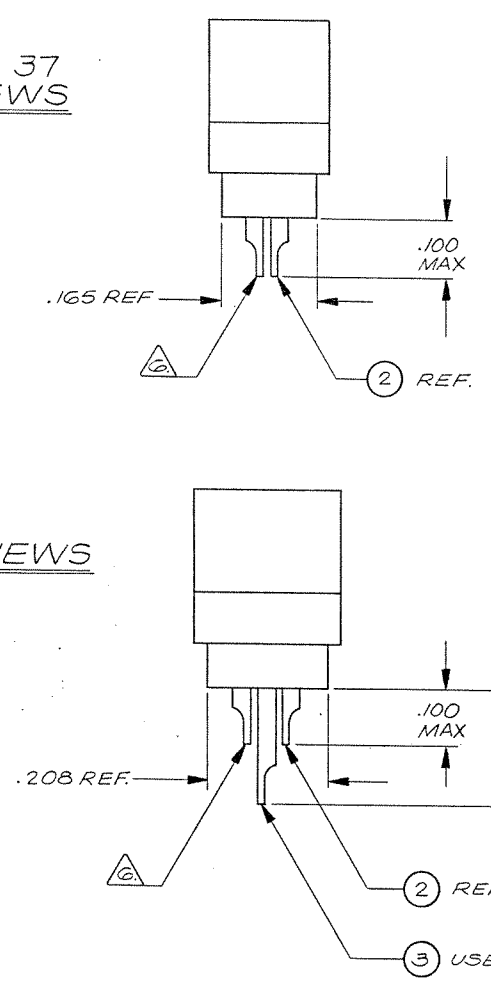
C Combine M & CD Dwg



9 THRU 37 CONFIGURATION



51 SIDE VIEWS



51 CONFIGURATION

(SHOW WITH SOLDER POT TERMINATIONS FOR REFERENCE ONLY. WIRE TERMINATIONS ARE THE SAME CONFIGURATION)

NOTES: UNLESS OTHERWISE SPECIFIED

- 1. MARK "MALCO" OR MALCO LOGO, MILITARY PART NO. (e.g. M83513/07-\*), CODE IDENT. NO., & DATE CODE WITH .047 MIN HIGH CHARACTERS IN APPROXIMATE LOCATION SHOWN.
- 2. EPOXY USING HYSOL # 4215 & 3561.
- 3. EPOXY WICKING - UNINSULATED WIRE .050 MAX. INSULATED WIRE UP TO # 25 AWG .125 MAX. INSULATED WIRE # 24 AWG OR LARGER .200 MAX.
- 4. CRIMP LEADS OR SOLDER POTS INTO CONTACTS PER MEP 302-05.
- 5. NO SCRATCHES SHOWING BASE METAL PERMITTED ON SOLDER POTS.
- 6. CHAMFER ON SOLDER POTS ARE TO BE PARALLEL WITH SIDES OF CONNECTOR WITHIN 10 DEGREES.

Tyco Customer Drawing 1-1532149-5

QTY REQD	CODE IDENT	PART OR IDENTIFYING NO.	NOMENCLATURE OR DESCRIPTION
PARTS LIST			
UNLESS OTHERWISE SPECIFIED DIMENSIONS ARE IN INCHES TOLERANCES ARE:		CONTRACT NO.	
FRACTIONS	DECIMALS	ANGLES	
±	.XX ±	±	
	.XXX ±		
MATERIAL		APPROVALS	DATE
		DRAWN G. SAUER	5-17-82
		CHECKED [Signature]	5-18-82
		PR. ENG. [Signature]	5-18-82
		APPD.	
FINISH		<b>MALCO</b> A MICRODOT COMPANY, INC. 306 PASADENA AVE., SO. PASADENA, CALIF. 91030	
		<b>RACK &amp; PANEL CONNECTOR, RCPT. MCD PER MIL-C-83513</b>	
		SIZE	CODE IDENT NO. DRAWING NO.
		D	98278 095-0000-0446
NEXT ASSY USED ON		PROD. CODE 824 CODE M	
APPLICATION		DO NOT SCALE DRAWING	
		SCALE NONE SHEET / OF /	